



Good to Know!

Current Office Hours:

Monday - Friday 8:00am - 5:00pm

Phones close at 4:30pm

Saturday 8:00am - 12:00pm

Same day ill visits only

Sunday Closed

We do not accept walk ins at any time. All visits are by appointment only. Please call the office to schedule your child's well or ill visit appointment.

Our Phone Number: (309) 662-0504

Our Fax Number: (309) 663-7645

Our Address: 306 Saint Joseph Drive
Bloomington, IL 61701

Check-In Changes

It is still hard for us to believe that it has been 5 years since the Covid-19 pandemic! We made adjustments to how we did almost everything to accommodate the changing landscape of healthcare during those initial years. We are happy to continue returning to our normal routines, and this includes the use of the Wait-in-Car option.

As we move out of "sick season" and into our busy summer of school and sports physicals, we want to streamline our workflow to the most efficient we can be for our families and providers. To aid in this, effective May 7, 2025, we have discontinued the option for families to wait in their car until the nurse is ready to room the patient.

We understand that some families have immuno-compromised children who may still need this option. We are happy to accommodate those families. Please let the scheduler or nurse know when making your child's appointment that your child will need this accommodation and we will note that in the chart.

We appreciate your continued patience and understanding with the necessary changes and updates to best meet the needs of our families and practice.

Registration Updates

We recently updated our registration paperwork and will be asking families to complete the new form at their next visit. These updates will help ensure we have the most up to date and accurate information on file for your child and family.

We know that paperwork can be a tedious part of the check in process and we appreciate your compliance with this update. If you prefer to complete it electronically, you may visit the [Forms](#) page on our website, complete the registration document online and submit to our HIPAA secure inbox. Doing so in advance will save you time at check in and can be completed whenever is convenient for you. Thank you!





A Note About Community Mobile Well Visit Clinics

Carle and OSF have partnered with the schools in Unit 5 and District 87 to offer mobile clinics for school and sports physicals. We recognize this effort to improve access to care for students in our community.

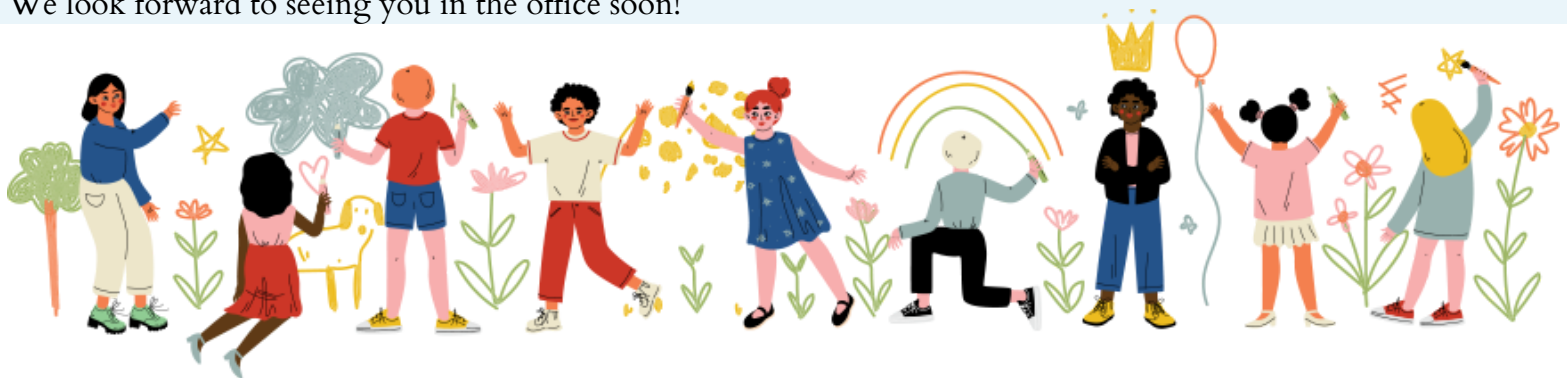
Our practice believes that annual well visits provide the best opportunity for the provider to observe the progress of your child's physical and mental growth and development, to provide counseling and education to parents and caregivers, to detect potential concerns through physical examination and screening tests, provide immunizations, and develop the provider-patient-parent relationship! This is also the ideal time for parents to raise questions and concerns about their child's development, behavior, nutrition, safety, and overall well-being.

So, of course our providers would prefer that our patients are seen in our office for continuity of care, but we respect each parent's right to decide what works best for their family, and want to pass on some helpful information should you elect to utilize a mobile clinic for your child's school or sports physical.

It is our understanding that these clinics will be providing the physical exam, immunizations, and the physical forms required for school and sports. The physical form must be completed and signed by the provider performing the exam, so our practice will not be able to provide a new physical form should the one from the mobile clinic be lost or misplaced without performing a physical in our office. Additionally, it is our office policy that in order to administer immunizations and prescribe medications, the patient must have a current physical on file with one of our providers. Due to the guidelines of most insurance carriers, they will only cover one preventative care (well-child) visit per year. As the mobile clinic visit would be billed to insurance as a preventative visit, any additional preventative visits for the year may be denied by insurance.

We know how busy the summer can be and how quickly the days fly by! We have plenty of openings available to meet your family's needs for scheduling school and sports physicals in our office. The early bird gets the worm, so [call now](#) to have the best selection of available appointments and beat the end of summer rush!

We look forward to seeing you in the office soon!





Looking for Lactation Support? We've got you covered!

Breastfeeding Positions

Cradle hold Cross-cradle hold Laid-back position

Side-lying position Football hold for twins

Lying down with twins Dangle feeding Football hold

Upright breastfeeding (aka breast hold) Breastfeeding in a baby carrier

Online Resources

[Home - La Leche League USA \(llusa.org\)](#)
[KellyMom.com Breastfeeding and Parenting](#)
[Droplet >> Science \(firstdroplets.com\)](#)

Proper Latch Technique

1. Baby's mouth is wide open.
2. Baby's lips are flanged out.
3. Baby's tongue is curled under the breast.
4. Baby's nose is touching the breast.
5. Baby's mouth is covering the areola.
6. Baby's mouth is fully attached to the breast.

Facebook Group

Moms of Beautiful Babies (MOBB)
 Meets every Wednesday from 10-12 at Play
 Synthesis to socialize and get lactation help

Lactation Consultants

Carle BroMenn
 Open to mothers who delivered their baby at Carle BroMenn.
 309-268-5371
 Hours of availability vary.

OSF St. Joe
 Open to all mothers, regardless of where their baby was delivered.
 Sarah Musselman, RN, BSN, IBCLC
 309-665-4704
 Monday - Saturday

Birth Center
 Open to all mothers, regardless of where their baby was delivered.
 Trish Wierenga FNP, IBCLC, PMH-C
 309-722-4020, option 4
 Mondays, Tuesdays & Thursdays

Milk Guide
 Open to all mothers in Bloomington-Normal, Peoria & surrounding areas for in home or virtual consultations.
 Emmalyn Paul-Gregg, IBCLC, CLS
 309-306-2728
 Hours vary
 *does not accept state insurance

Breastfeeding can be difficult - both emotionally and physically. Our providers and pediatric nursing staff will work with you and your baby to increase your chances of having a long and successful feeding experience. Visit our [website](#) for a printable version of our brochure and other helpful links!

Have a happy, healthy, and safe summer!

~Stay Well,
The Providers & Staff of
Bloomington Pediatrics

